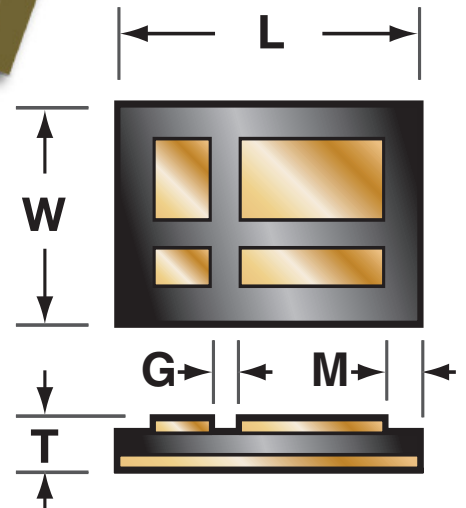
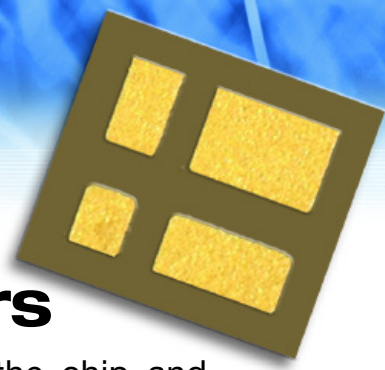
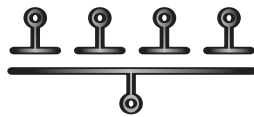


# CSX Series Multiple-Value Custom Capacitors

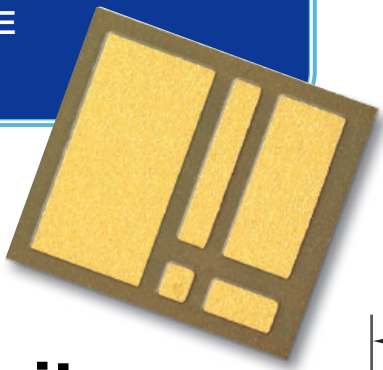
A common electrode on one side of the chip and multiple custom electrodes on the other side. The capacitor array can be used as individual capacitors on a single chip or as a step-adjustable capacitor by connecting combinations of electrodes to achieve the desired capacitance.

## CSX Electrode Configuration

Multiple-value electrode array



● PLEASE CALL COMPEX FOR FINAL DETAILS & SPECIFICATIONS OF THE CUSTOM DESIGNS SHOWN HERE



# CAD Series Step-Adjustable Binary Array Capacitors

The arrays of capacitors are arranged in binary ratios (1-2-4, 1-2-4-8, and 1-2-4-8-16) to allow adjustment of capacitance from 1 to 31 units by connecting appropriate electrodes in parallel. Additional values of capacitance can be obtained by using series and/or parallel connections. Individual electrode values from 0.1pF, chip size dependent on values and dielectric.

## CAD Electrode Configuration

Binary electrode array

